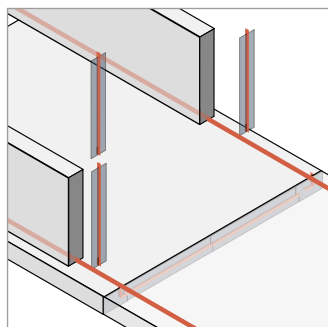
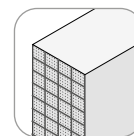


Tender / Order form - Stremaform® working joints wall



Formwork for concrete pours



Max Frank GmbH & Co. KG
 Mitterweg 1
 94339 Leiblfing
 Tel. +49 9427 189-0
 info@maxfrank.com

Project name:
 Site address:
 Site contact:

Tender
 Order

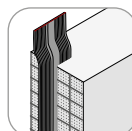
Waterproofing



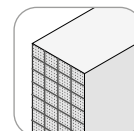
coated metal water stop



water stop with coating at the splice

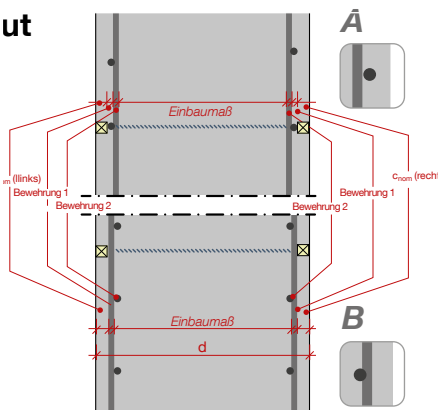


carrying cage for rubber/PVC water stop



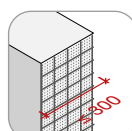
without waterproofing

Layout



wall depth	d mm	
left:			
left cover	$C_{nom\ top}$ mm	
1	\emptyset mm ,	number of layers n pc.
2	\emptyset mm ,	number of layers n pc.
mounting dimension	EBM mm	
1	\emptyset mm ,	number of layers n pc.
2	\emptyset mm ,	number of layers n pc.
right cover			
right:	$C_{nom\ bottom}$ mm	

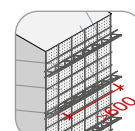
Mounting dimension - recommendations



Stremaform®
 $b < 300\ mm$



Stremaform® stiffened
 $300\ mm < b < 600\ mm$

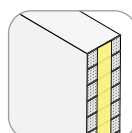


Stremaform® stiffened + fixing anchors
 $b \geq 600\ mm$

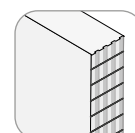
Design options



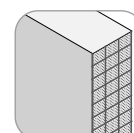
standard construction joint



crack inducing joint

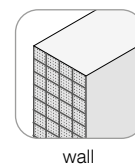


indented joint according to EC2



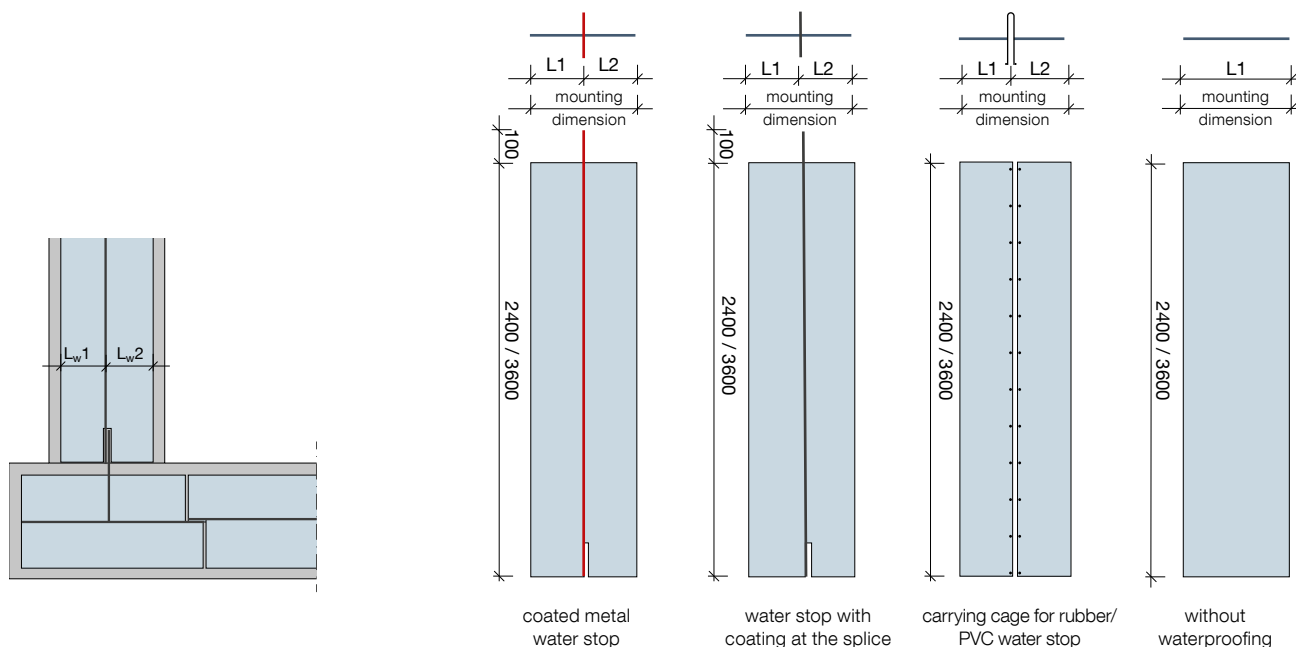
fine mesh for free flowing, self compacting concrete

Tender / Order form - Stremaform® working joints wall



wall

Dimension



Units

available shapes (standard)

