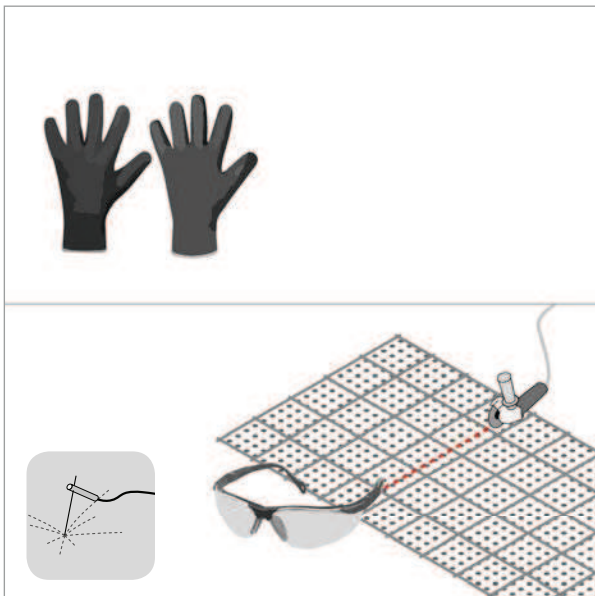


Safety

Protective clothing normally worn on building sites as well as cut-proof gloves are to be worn for the laying and transport of Stremaform® formwork elements.

Safety glasses are to be worn when cutting the Stremaform® formwork elements to size and fixing them by welding on site.



Sikkerhed:

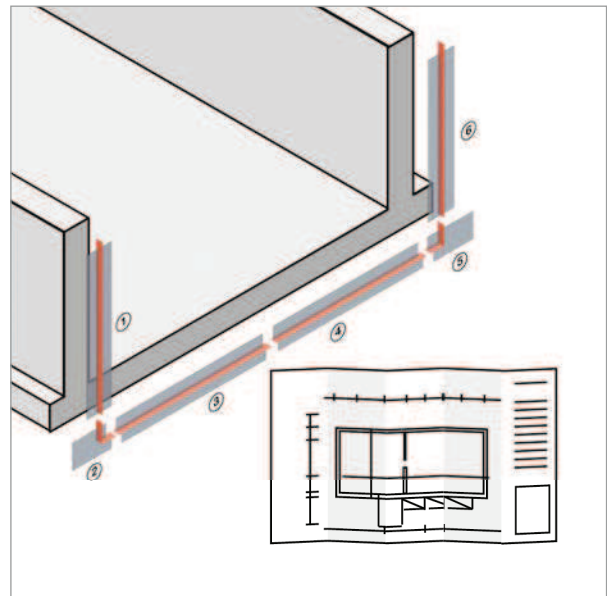
Almindelig arbejdstøj anvendes sammen med snitsikre arbejdshandsker ved transport og montage af Stremaform elementer.

Sikkerhedsbriller skal anvendes ved evt. tilskæring af Stremaform® elementer eller ved evt. fastgørelse ved svejsning.

Installation plan and overview

An installation plan is drawn up if necessary in order to clearly show the positioning and local installation of the individual Stremaform® elements.

The numbering and positions of the individual elements are to be taken from this plan.



Installationsplan og oversigt:

En installationsplan laves efter ønske, for præcist at vise placering af hvert Stremaform® element.



GOTTFRED PETERSEN A/S

Langlandsvej 15 · DK 5500 Middelfart

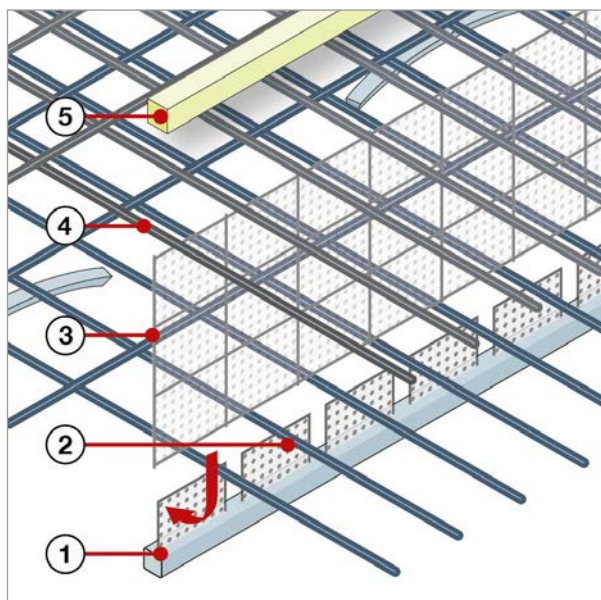
T +45 6341 1266 · F +45 6441 1419

byg@gottfred.dk · gottfred.dk

www.maxfrank.com

System construction – formwork element

- ① Placement of the Stremaform® spacers above the blinding layer along the joint geometry
- ② Installation of the lower reinforcement layer in the prefabricated recesses in the spacer
- ③ Erection and fixing of the Stremaform® formwork element
- ④ Installation of the upper reinforcement and fixing of the element
- ⑤ Wooden batten

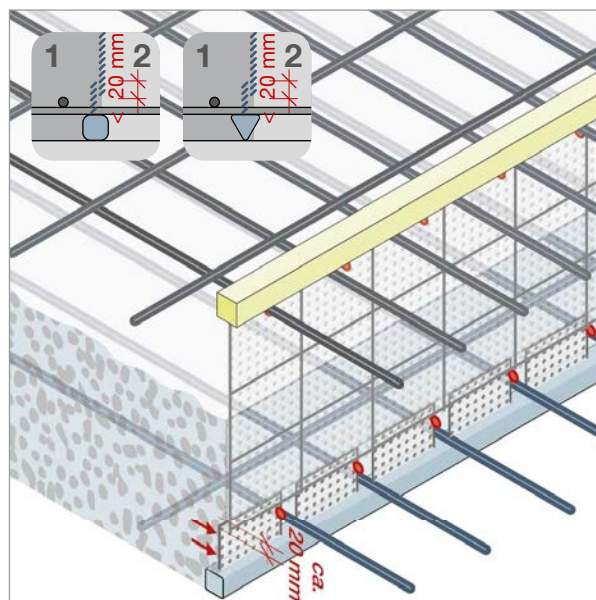


Systemopbygning

1. Placering af Stremaform® fiberbetonafstandsholder ovenpå på forskalling eller renselag, på langs af fugen.
2. Nederste armeringslag placeres i de præfabrikerede udsparringer i fiberbetonafstandsholderen.
3. Placering og fiksering af Stremaform® elementet.
4. Placering af de øverste armeringslag, fastbinding af Stremaform® elementet pr. 150 mm.
5. Træliste på toppen af armeringen, fastgøres.

Mounting the Stremaform® spacer

Placement of the Stremaform® spacers on the blinding layer along the joint geometry. Following the installation of the lower reinforcement layer, the individual Stremaform® elements are lined up along the joint in a row and fixed. A 20 mm overlap is integrated in the expanded mesh of the Stremaform® spacer in the factory and securely seals the reinforcement layer passing through.



Montering af afstandsholder

Placering af Stremaform® fiberbetonafstandsholder ovenpå på forskalling eller renselag, på langs af fugen. Efter at nederste armeringslag er lagt ud, placeres hvert Stremaform® element i forlængelse af hinanden og fastgøres med bindetråd. Net i afstandsholder og Stremaformens® net overlappes med min. 20 mm og sikre dermed at det gennemgående armeringslag forsegles.

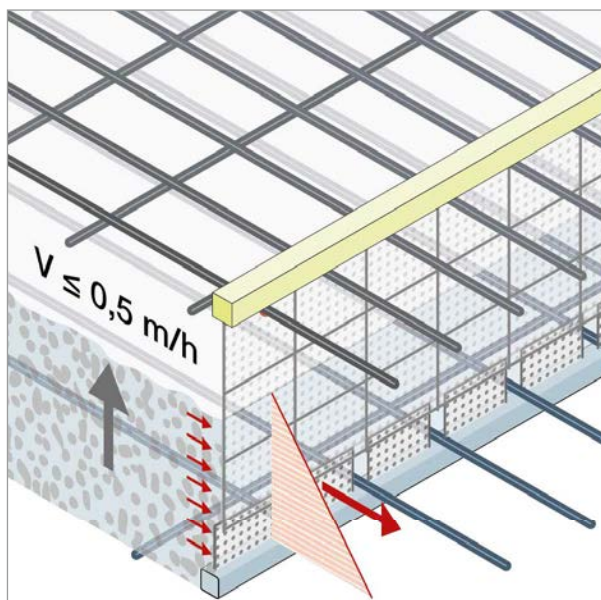


GOTTFRED PETERSEN A/S

Langelandsvej 15 · DK 5500 Middelfart
T +45 6341 1266 · F +45 6441 1419
byg@gottfred.dk · gottfred.dk

Concreting speed

The mounting and fixing recommendations and the Stremaform® variants are designed for a maximum concreting speed of 0.5 m/h.



Hastighed på betonudstøbning

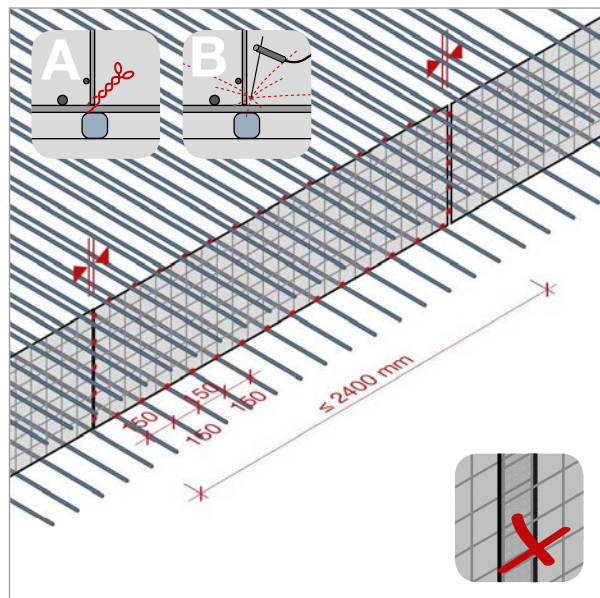
Monterings- og fastgørelses systemet for Stremaform® er dimensioneret til en maks. betonudstøbningshastighed på 0,5 m/time.

Mounting and fixing

The Stremaform® formwork elements are to be fastened all round at distances of 150 mm to the lower and upper reinforcement and to the following elements on site.

Fixing can be accomplished with tie wire (A) or by welding (B).

Overlaps of Stremaform® are to be avoided so that no voids are created in the concrete structure.



Montering og fastgørelse

Stremaform® elementerne skal fastgøres pr. 150 mm hele vejen rundt, til øverste og nederste armeringsjern, og til til det følgende Stremaform® element.

Fastgørelsen kan ske med **bindetråd (A)** eller ved svejsning (B).

Overlapping af Stremaform elementer skal undgås, for at forebygge hulrum i betonen.



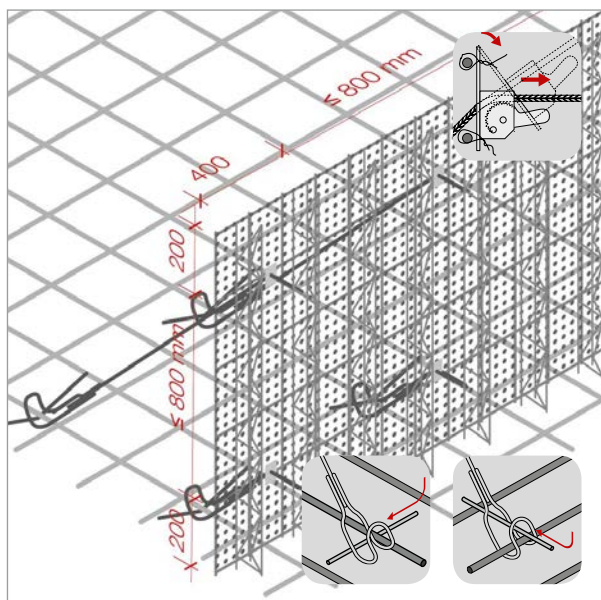
GOTTFRED PETERSEN A/S

Langelandsvej 15 · DK 5500 Middelfart
 T +45 6341 1266 · F +45 6441 1419
 byg@gottfred.dk · gottfred.dk

Stremafix® back anchoring

The Stremafix® back anchoring is suitable for the absorption of the concrete pressure with installation dimensions larger than 800 mm. The Stremafix® back anchoring consists of support rods on the Stremaform® formwork element, tensile bar with double hook, securing bar and eccentric clamp. Welding work can thus be dispensed with entirely.

The fixing can be mounted in the different reinforcement layers (x/y).



Stremafix® afstivning

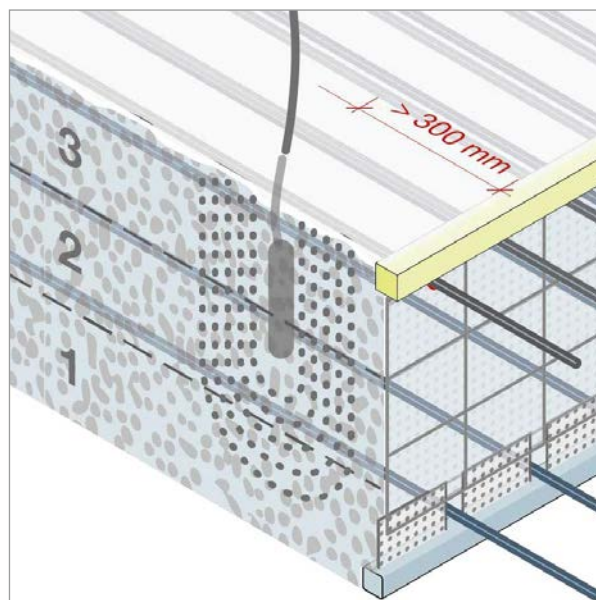
Stremafix® afstivningen kan optage betontrykket ved støbehøjder større end 800 mm.

Stremafix® afstivningen består af fordelingsstænger monteret på Stremaform® elementet, **trækstænger**® med dobbelt buk, **sikringsbolt**® og **formlås**®.

Distance of the compaction device

So as not to unnecessarily increase the concrete pressure on the Stremaform® formwork element, a distance of over 300 mm should be maintained between the vibrator and the formwork element.

The layer-wise installation of the concrete in sections of 40 cm to 50 cm is recommended.



Stavvibrator afstand

For ikke unødvendigt at øge betontrykket på Stremaform® elementet, skal en afstand på over 300 mm mellem form og stavvibrator tilstræbes. En lagvis udstøbning i lag på 400 mm til 500 mm, anbefales.

Stremafix® Bracing (slab)

Stremafix® Afstivning (dæk)



GOTTFRED PETERSEN A/S

Langelandsvej 15 · DK 5500 Middelfart
T +45 6341 1266 · F +45 6441 1419
byg@gottfred.dk · gottfred.dk

